

eduroam

'eduroam' is a brand name for global wireless roaming service which is provided by 11,492 universities and research institutes of 69 countries over the world. When you visit domestic or international universities or research institutes,

if you find 'eduroam' SSID, your id and password for eduroam service is same as your portal ones.

- Table of Contents -

1. Laptop(Windows7)	3
2. Laptop(Windows8 or 10)	8
3. Android Device(Android OS)	10
4. MacBook(MacOS)	11
5. iPhone/iPad(iOS)	12
6. Linux OS	13

SNU Office of Information Systems and Technology launched eduroam(education roaming) on August 17th, 2015.

Eduroam (Education Roaming) is the secure worldwide federated network access service developed for the international research and education community (69 countries / around 1,100 education institutions). It provides network access without the need to gain guest credentials on arrival to an eduroam location.

○ Method

How SNU member use eduroam

Select “eduroam” from SSID list and enter your credentials in the following format:

Username / Password : SNU_ID@snu.ac.kr / Password

Partly service can be limited according to the wireless management policies of each education institution.

※ Due to the characteristic of SNU authentication security, users need to additionally configure settings. (filling in eduroam profile)

How visitors login to eduroam at SNU

Persons from participating eduroam institutions may establish a wireless connection at SNU using their own university' s eduroam credentials after selecting eduroam from SSID list.

○ Security Policies

Users have to observe security policies of SNU during using eduroam at SNU.

- PC Securities : Internet connection is only available for users who installed PC Integrated Security S/W after accessing Wireless network. (Users are recommended to inspect PC vulnerability.)
- Internet Policies: Internet bandwidth per IP address is limited (15Mbps) and some of ports are blocked from 8:00 ~ 19:00.

※ <http://eduroam.snu.ac.kr>

※ Inquiry : IT Emergency Call 880-8282(Korean), 880-2121(English)

1. Windows 7 Manually Set up

1-1. Click an wireless network icon on the taskbar.

The list is split by the type of available network connections.
Click 'SNU-1st-time'.



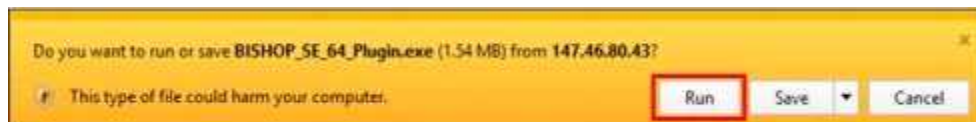
1-2. Open any web browser
and click 'SNU MEMBER'. (교직원/학생WiFi)

1-3. Guidance for laptop setting is below. Click 32bit or 64bit.

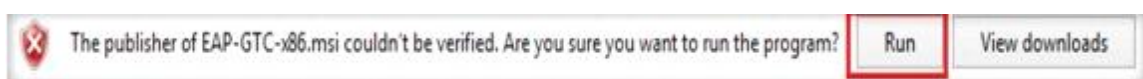
(※ 32bit : BISHOP_SE_32_Plugin.exe, 64bit : BISHOP_SE_64_Plugin.exe)



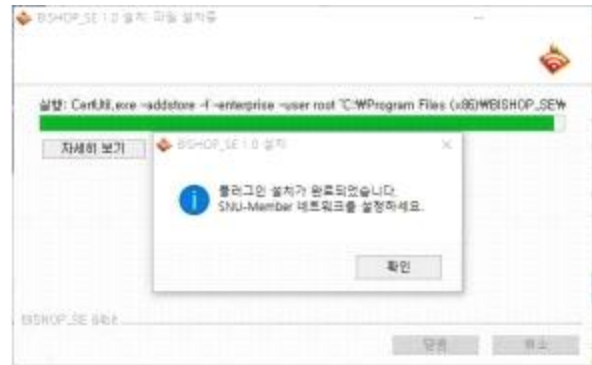
Click "Run".



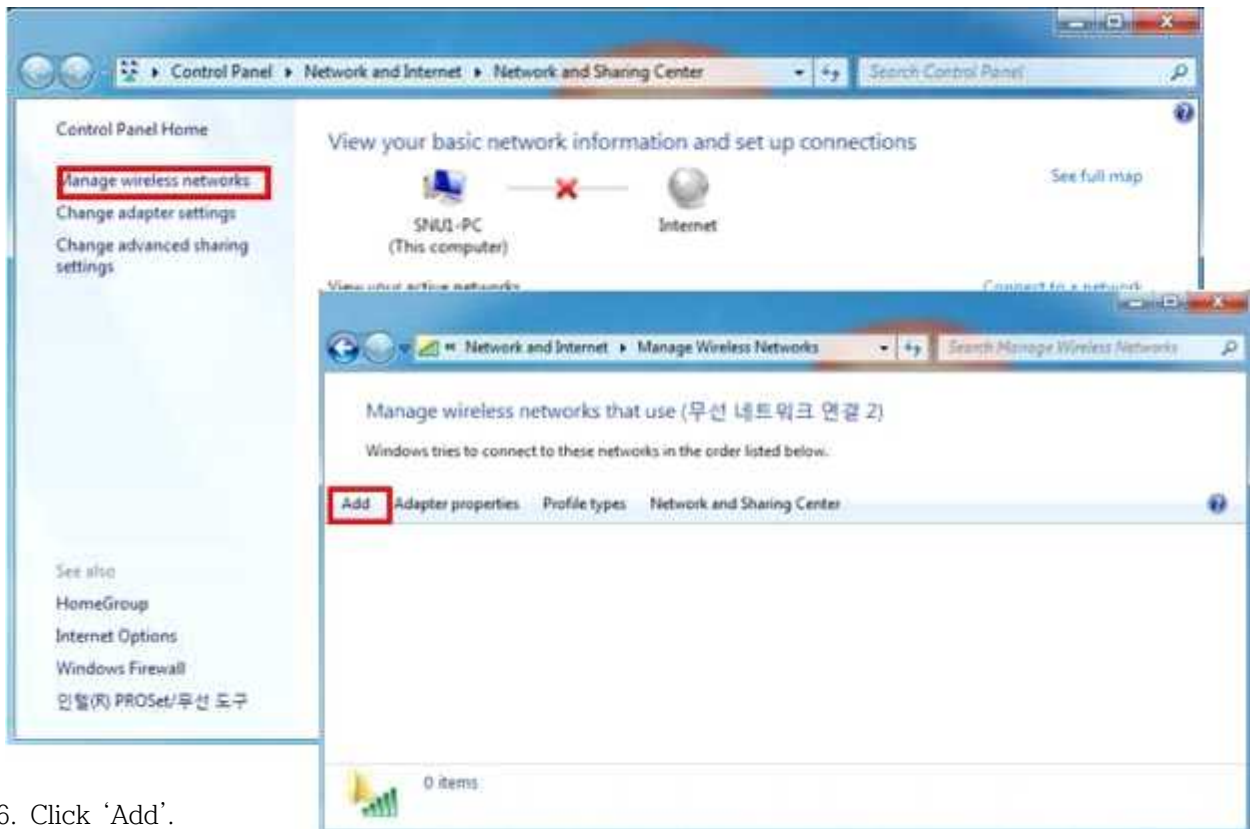
Click "Run".



- 1-4. Click 'Run' or 'Save'. After downloading open that file.
Check '동의함' and click 'OK'.
Configuration for laptop will be processed.

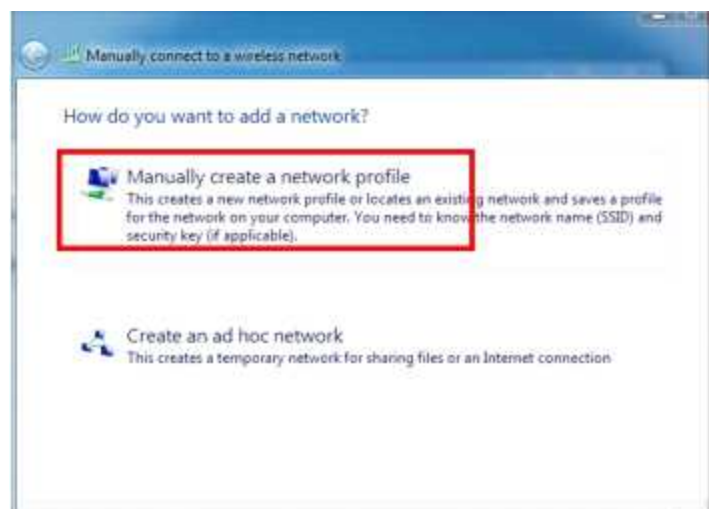


- 1-5. Control Panel → Network and sharing center → Set up a new connection or network



- 1-6. Click 'Add'.

- 1-7. Click 'Manually create a network profile'.



1-8. Enter

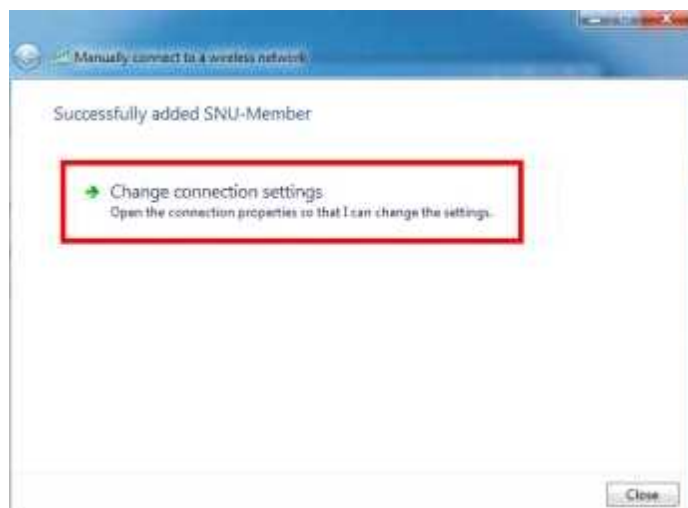
- Network name : **eduroam**
- Security type : WPA2-Enterprise
- Encryption type : AES

check(✓) 'Connect even if the network is not broadcasting'



1-9. click

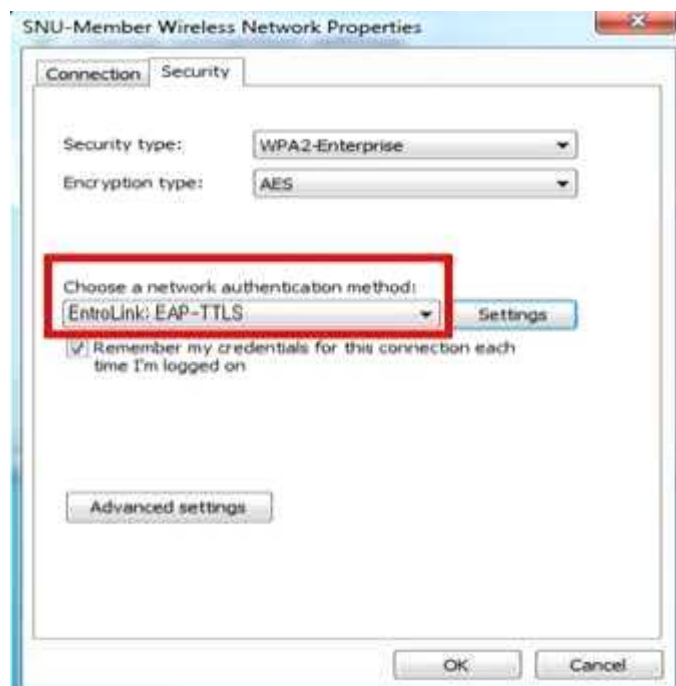
'Change connection settings'



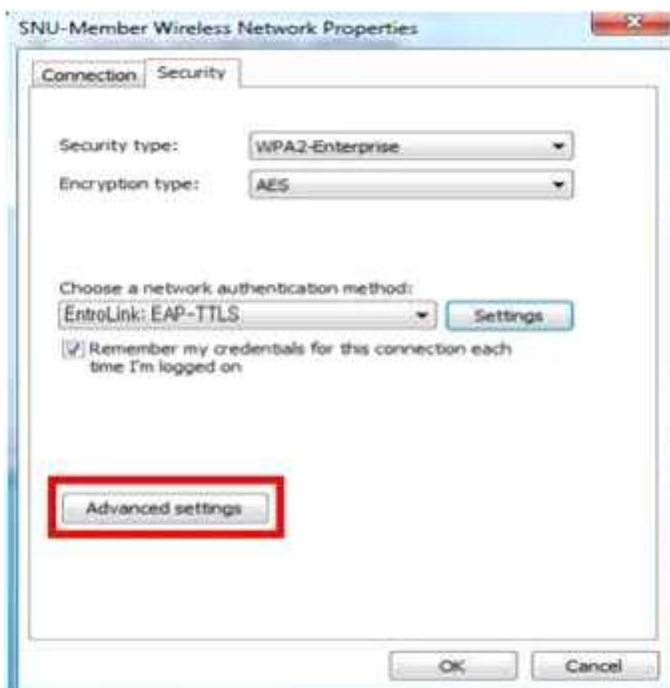
1-10. Click 'Security'.

Choose a network authentication method
: select 'Microsoft:Protected EAP'

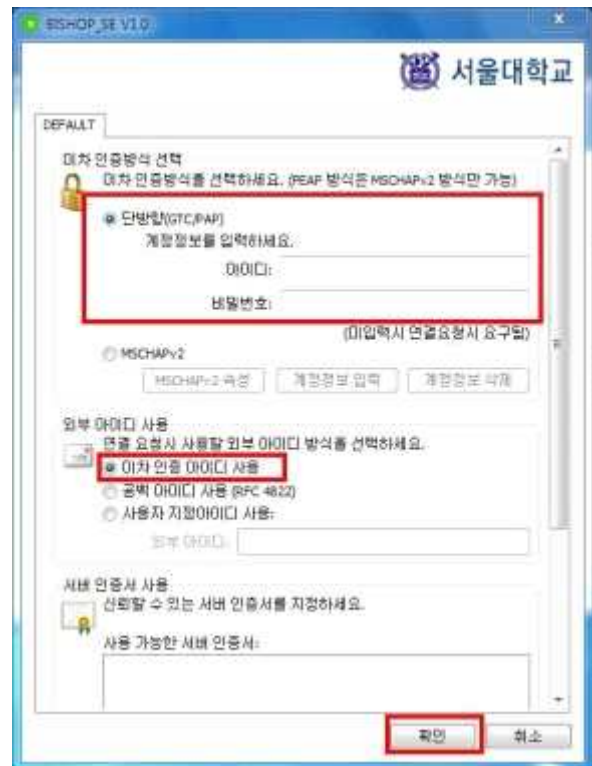
click 'Settings'



- 1-11. 이차인증방식 선택: '단방향(GTC/PAP)'
(select Second Authentication Method)
enter your SNU ID and password.



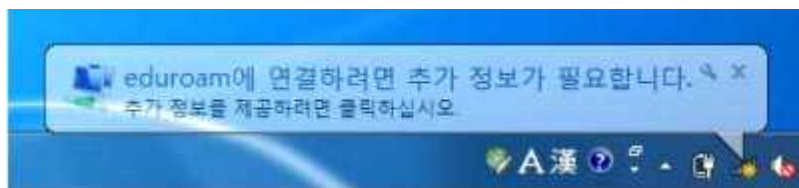
- 1-13. Check(✓) 'Specify authentication mode'.
Select 'User authentication'.
Click 'OK'.



- 1-12. Click 'Advanced settings'.



1-14. Click 'If additional information is needed to connect 'eduroam'.



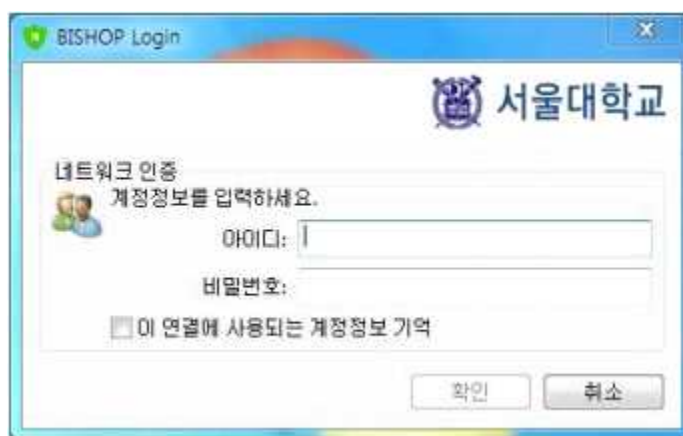
(or Click an wireless network icon on the taskbar.
Click 'eduroam' .

1-17. Enter

-User name : **SNU_ID@snu.ac.kr**

-Password : password

Click 'OK'.



1-18. The configuration is complete.

2. Windows 8 or 10 Manually Set up

2-1. The list is split by the type of available network connections. Click 'SNU-1st-time'.

2-2. Open any web browser and click 'SNU MEMBER'. (교직원/학생WiFi)

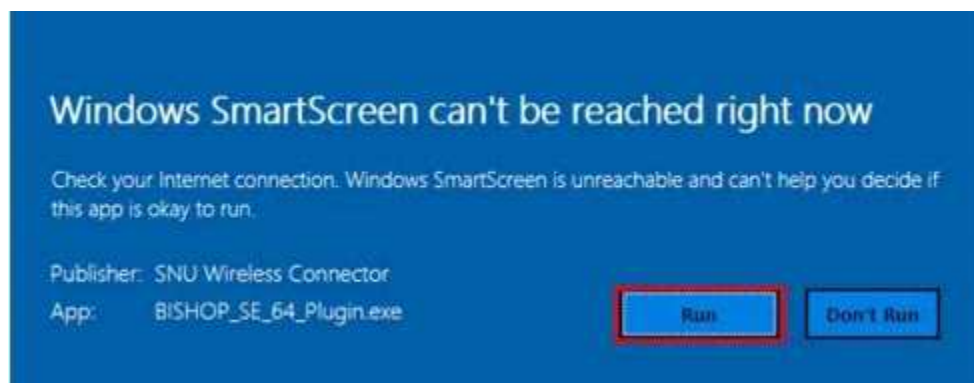
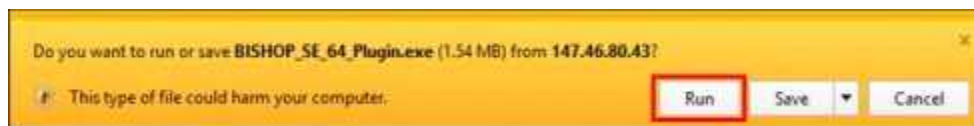


2-3. Guidance for laptop setting is below. Click 32bit or 64bit.

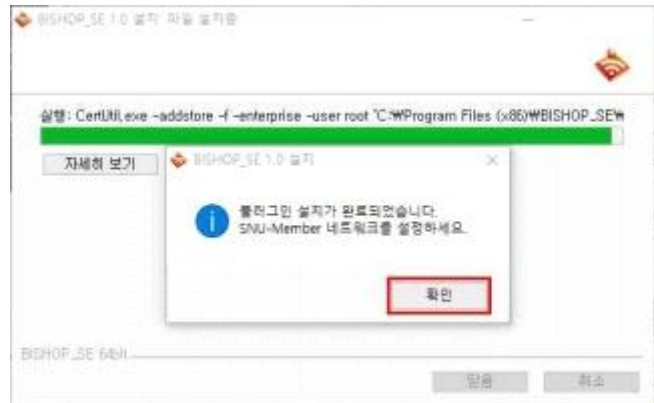
(※ 32bit : BISHOP_SE_32_Plugin.exe, 64bit : BISHOP_SE_64_Plugin.exe)



Click “실행(Run)” → “실행(Run)” → “실행(Run)”



2-4. Click “확인(OK)”.



2-5. Click an wireless network icon on the taskbar. ⇒
Click ‘eduroam’ .



2-6. Enter
-User name : SNU_ID@snu.ac.kr
-Password : password

(Don't enter Logon domain.)
Click ‘OK’.



2-7. The configuration is complete.

3. Android Device (Android)

3-1. Settings → Turn on WiFi
→ Select “eduroam” from SSID.

. Configuration

- EAP method : PEAP
- **Phase 2 authentication : GTC**
- Identity : **SNU_ID@snu.ac.kr**
- Password : SNU password

Click ‘Connect’.

SNU-WiFi

EAP 방식
PEAP

2단계 인증
GTC

CA 인증서
(설정 안 함)

사용자 인증서
(설정 안 함)

ID
SNU_ID@snu.ac.kr

익명 ID

비밀번호

☐ 비밀번호 표시

☐ 고급 옵션 표시

취소 연결

The configuration is complete.

Open any web browser and access the Internet.

4. MacBook (MacOS)

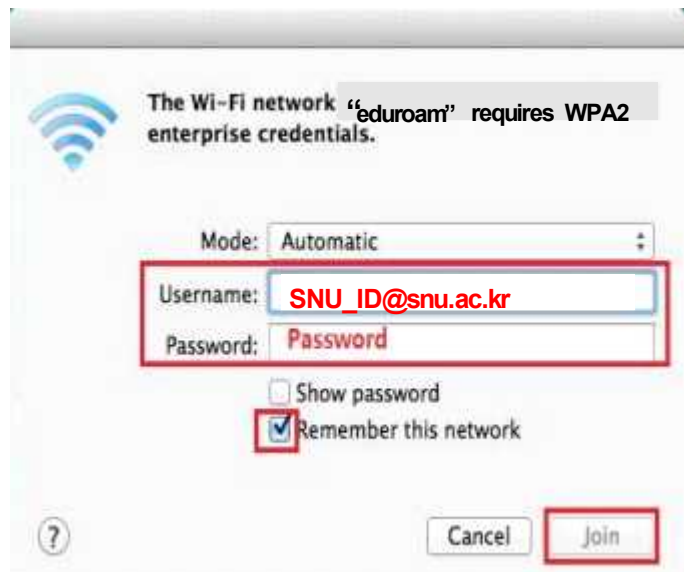
1. Click the WiFi icon in the upper-right corner and click 'Wi-Fi: On'.
2. Click '**eduroam**' from SSID.



3. Username: **SNU_ID@snu.ac.kr**
Password: SNU password
(If you Click the check box for 'Remember this Network', you don't have to enter ID and password next time.)

Click 'Join'.

The configuration is complete.



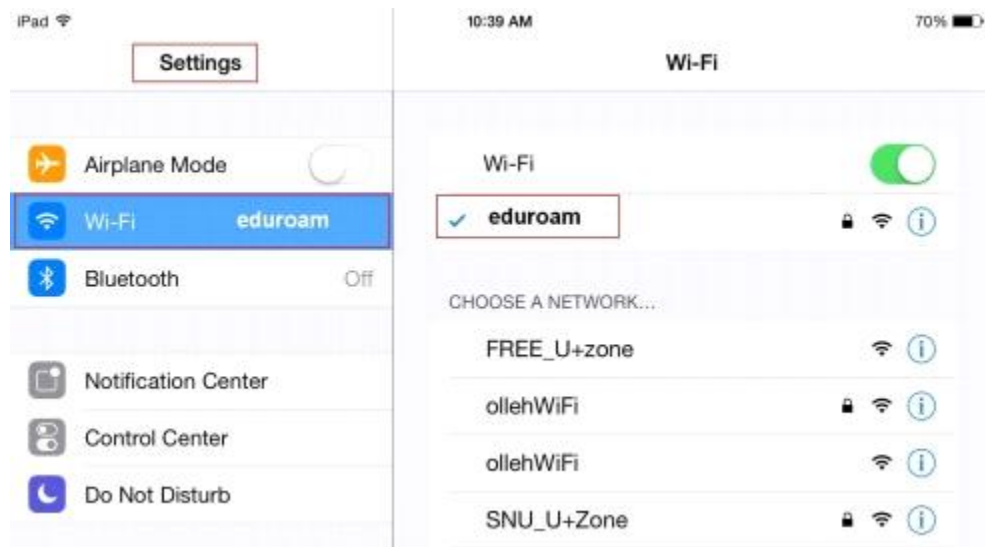
4. Open any web browser(Safari, Chrome, Internet explorer, Firefox).



5. iPhone/iPad (iOS)

1. Settings →

Turn on WiFi →
select “**eduroam**”
from SSID



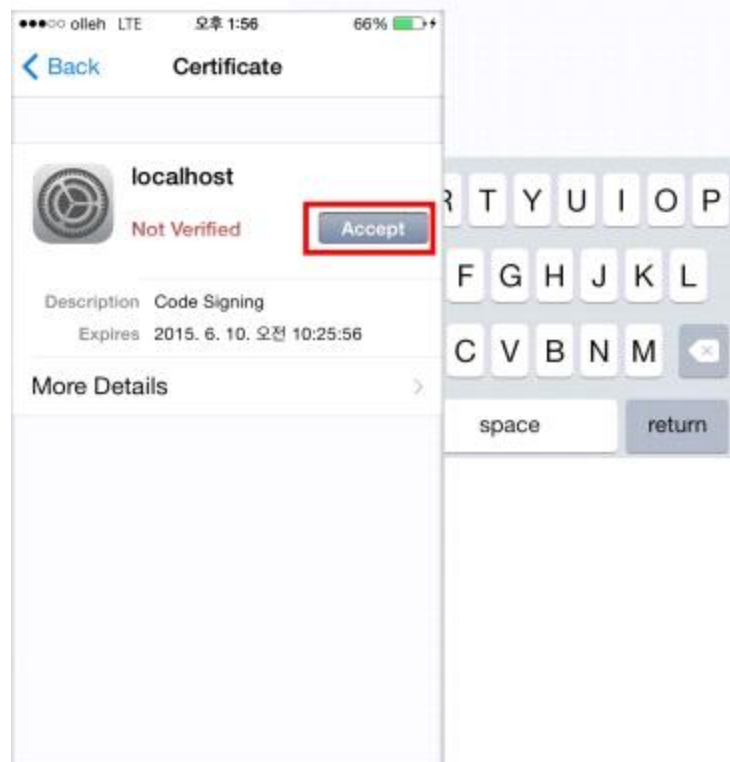
2. Enter username & password

- Username : **SNU_ID@snu.ac.kr**
- Password : SNU Password

Click “Join” .



Click ‘Accept’.



The configuration is complete.

Open any web browser.

6. Linux OS

1. Click WiFi icon on the taskbar.
Select 'SNU-1st-time' from SSID and click "Connect".



2. Open the browser and click '교직원/학생 WiFi'.



3. Click 'Manually setup Linux'. "Right-Click" your mouse to save as.



4. From the panel, right-click the 'NetworkManager' icon.
Click "Edit Connections ...".



5. Click "Add".



6. If popup

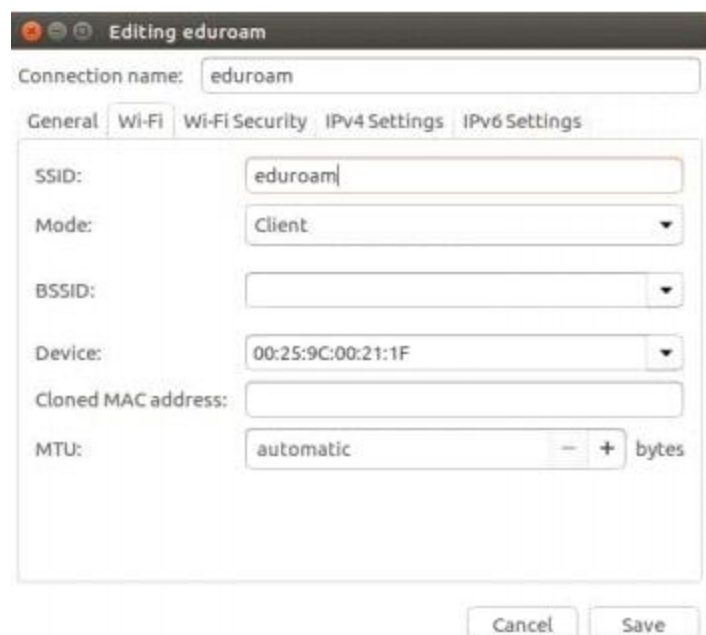


7. Connection Name : eduroam'.

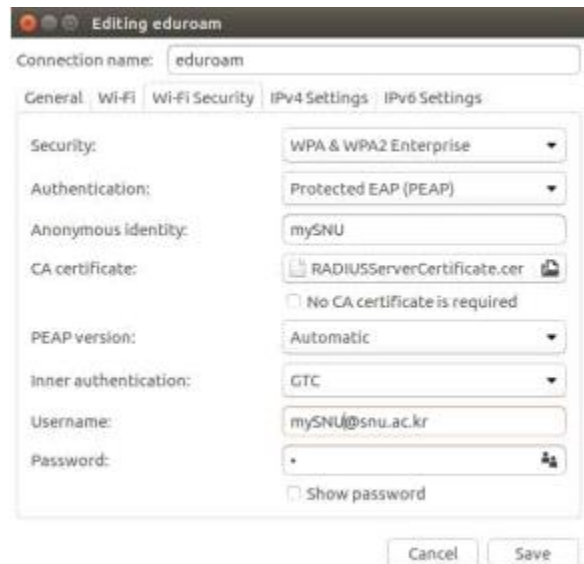
Under "Wireless" tab,

- SSID : eduroam
- Mode : Client

Click "Apply".



7. Under “Wireless Security” tab,
 - Security : WPA & WPA2 Enterprise
 - Authentication : Protected EAP(PEAP)
 - Anonymous identity : SNU-ID
 - CA Certificate
 - : Select the file which you downloaded in #4-3.
 - (※ FileName: RADIUSServerCertificate.crt)
 - Inner Authentication : GTC
 - User Name : SNU-ID@snu.ac.kr
 - Password : SNU password



Click “Apply”.

8. From the panel, click the "NetworkManager" icon.
And select ‘SNU-Member’ from SSID.



9. “SNU-Member” connection is established.