

Novel coronavirus infection Prevention dos and don'ts

Major symptoms

Fever

pneumonia

respiratory symptoms
Cough, sore throat, etc.

Risk factors

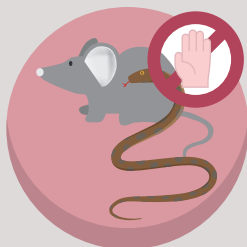
**Appearance of symptoms
after visiting China**



If you are traveling to China



If you experience
respiratory symptoms
such as cough,
must wear a mask
(mandatory when
visiting health facilities)



**Do not touch
animals**



**Do not contact with
people who have a fever
or respiratory symptoms**
coughing, sore throat, etc.



**Wash your hands with soap
and running water for
more than 30 seconds** and
over your mouth with **sleeve**
when coughing.

If you experience symptoms* after visiting China

*Major symptoms: Pneumonia, fever, respiratory symptoms (coughing, sore throat, etc.)



**Consult with your
local public health center
or call '1339'
or 'Area Code +120'**



Wear a mask*

*Especially
when going out or
visiting health facilities



**Inform medical staffs of
your travel history when
visiting selected clinics***(health facilities)

*For more information on selected clinics :
Check KCDC homepage, Call local Health centers or
call 1339 or your area code+120